



Washer Disinfector Dryer



Maintaining Nature

www.mapindus.com



■ Introduction

Map Industries is one of the leading suppliers of decontamination equipment that has succeeded in bringing knowledge and experience in this field to offer a comprehensive range of Washer Disinfectors to meet your every need.

The equipment has pre-wash and thermal disinfection cycle, separated by rinse cycle and followed terminally by drying cycle thermo disinfection by attaining temperature of atleast 90°C and holding the temperature through programmable length of time.

The machine is capable of processing and disinfecting all types of instruments and OT equipment including hollow instrument and scopes.

■ Design & Structure

Smart Control System

(Micro Processor controlled)

The large color touch display provides user friendly operation. The informative display provides the operator with excellent guidance to monitor the progress of the cleaning process.

Cycle Systems

The range of predefined programs allow the user to select from a wide array of options to optimize the cleaning cycle and processing times. Washing pump with high flow rate and effective spray pressure for cleaning equipments. Water connection for cold, warm & RO (reverse osmosis) water.

■ Handling Accessories

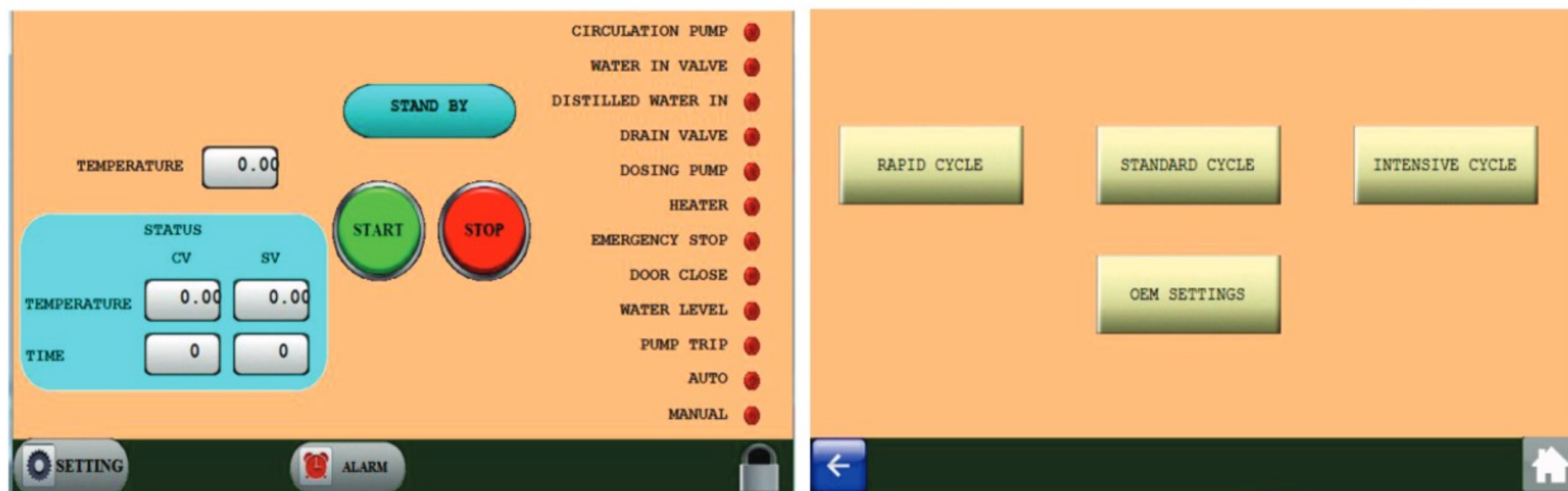


Instrument Reprocessing : Multi layer racks are provided for this purpose. The racks can also have special fitments to process instruments with lumens along with standard surgical instruments. & racks also provides for shoes dishes etc.

Transportation Trolleys : The transport carts facilitate movement of the racks with the CSSD and assist loading and unloading of the racks in the Washer Disinfector. The transport carts are also constructed from stainless steel and have lockable wheels for maximum safety. The transport cart has a tray at the bottom to retain water to ensure maximum hygiene.



■ Automation Structure



- The large, color, touch screen display offers clear visibility and access to critical information for visualization of cycle performance / status.
- Simple to use with clear and uncluttered operation.
- Easy to learn systems - reduces need for training.
- A wide array on inbuilt safety functions and monitoring options, which assures excellent results every time.
- Chamber temperature with two high quality durable and reliable probes - Pt1000 or equivalent.
- Cycle time.
- Display and controls : LCD with touch screen / soft touch control with auto - diagnostic checking that constantly monitors and displays current cycle status and alarms, allows optimizing the washing process.
- Program cycle - will have four or more programs and with capability for use with various kinds of equipments - solid / hollow etc.
- Disinfectomat series is fitted with a printer that allows all program and process data to be printed directly on to a paper.



MAP INDUSTRIES has established itself nationally as a pioneer in innovative equipment and solution with a futuristic Vision in Pharmaceutical Companies, Laboratories & Hospital CSSD.

MAP : WASHER DISINFECTOR DRYER

CHAMBER SIZE (W x H x D)	530 x 620 x 500 mm	600 x 800 x 600 mm
OVERALL DIMENSION	600 X 870 X 600	760 X 1900 X 780
MODEL	MAP/WD/M	MAP/WD/L
CHAMBER / DOOR / PIPING	SS316L/SS304L	SS316L/SS304L
CIRCULATING PUMP / DOZING PUMP	✓	✓
INSTRUMENTS HOLDING BASCKETS	✓	✓
OUTER BODY	FIBER BODY	SS BODY
ELECTRICITY / AC SUPPLY	I PHASE	III PHASE
DRIYING	✓	✓
ISO / CE CERTIFICATE	✓	✓



📍 Our Address: A-103,104, Swarnim Ind. Park, Bakrol Dhamatvan Road, Bakrol Bujrang, Village:Bakrol, Ahmedabad, Gujarat- 382433, India.

🌐 Website: www.mapindus.com

✉ Email: info@mapindus.com, mapindustries94@gmail.com

☎ Abdul Hanif: 9687341157 | 9687771157